

People who have good temper will find the mistake quickly

Which number is missing?

| | | | | | | | | |
|----|----|----|----|----|----|----|----|-----|
| 1 | 2 | 3 | 4 | 5 | 6 | 7 | 8 | 9 |
| 10 | 11 | 12 | 13 | 14 | 15 | 16 | 17 | 18 |
| 19 | 20 | 21 | 22 | 23 | 24 | 25 | 26 | 27 |
| 28 | 29 | 30 | 31 | 32 | 33 | 34 | 35 | 36 |
| 37 | 38 | 39 | 40 | 41 | 42 | 43 | 44 | 45 |
| 46 | 47 | 48 | 49 | 50 | 51 | 52 | 53 | 54 |
| 55 | 56 | 57 | 58 | 59 | 60 | 61 | 62 | 63 |
| 64 | 65 | 66 | 67 | 69 | 70 | 71 | 72 | 73 |
| 74 | 75 | 76 | 77 | 78 | 79 | 80 | 81 | 82 |
| 83 | 84 | 85 | 86 | 87 | 88 | 89 | 90 | 91 |
| 92 | 93 | 94 | 95 | 96 | 97 | 98 | 99 | 100 |

How long did it take you to find it?

Nature's Fury

Presented by: Ariuntsetseg B.



4GIFs.com

4GIFs.com

1. What disaster are shown in the picture?

2. What other natural disaster can you think of?



Nature's Fury

Mount St Helens, the volcano in Clark County, Washington State, erupted on Monday morning. The disaster has caused at least ten deaths as well as massive destruction in that region of the state. The mountain was hit by two earthquakes just before half past eight. Then, at eight thirty-two, the top of the mountain was blown off by an explosion that was heard two hundred miles away. Huge blocks of ice and rock fell onto the surrounding area and the mountain was left 1300 feet shorter. Then the tremendous heat inside was released. Hot ash and gas came out of the mountain, causing a lightning storm as it rose into the air. White ash, along with steam and thick mud, continue to pour from the giant crater left by the explosion.

At each stage of this dramatic eruption people have been killed. The explosion caused the first casualties, several people were injured or died due to the force and heat of it. Then the hot ash started fires which have burned vast areas of forest, causing more deaths. Fortunately, fire-lighters have managed to put most of them out. The volcanic cloud was so large and dark that it was said to have turned day into night, forcing airports to close temporarily. One more life was lost as a pilot flew his aeroplane into the cloud and hit electricity cables. Mud from the volcano is running down the mountainside and filling rivers, causing flooding. People living nearby have been forced to leave their homes as the water continues to rise.

Rescue workers have picked up casualties and survivors by helicopter, and are moving them away from the dangerous areas. More victims are expected to be found during the next few days. One witness said that it had been like the end of the world. 'I really thought we were all going to die,' Jerry Irvine said. 'I've never been so terrified in my life.'

Scientists say that the top of the mountain had been 'growing' by five feet per day for several weeks before the explosion. They say that ash and mud could continue to pour out of St. Helens for up to fifteen years. Meanwhile, the people of Clark County are learning to cope with nature's fury.

Choose the best answer

1. When the volcano erupted, the top of the mountain

Was broken into pieces

2. The first people to die were killed by

The explosion

3. The volcanic cloud

Made everything very dark

4. People had to leave their homes as

There was flooding in the area

5. Before the eruption

The mountain had been getting taller

"Explain your answer"



Fill in the correct words. Use the words only once

To be hit, thick, tremendous, massive, volcanic, blocks, lightning, electricity, rescue, to start

1. **massive**
....desctruction.

2. **blocks**
....of ice.

3. **tremendous**
.....heat

4. **lightning**
.....storm.

5. **thick**
...mud

6. **volcanic**
...eruption.

7. **electricity**
.....cables

hit 8.
.....by
two earthquakes.

9. **rescue**
...workers.

10. **To start**
.....fires



A PICTURE IS
WORTH A
THOUSAND
WORDS

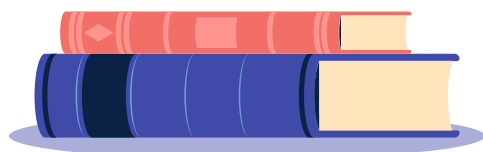
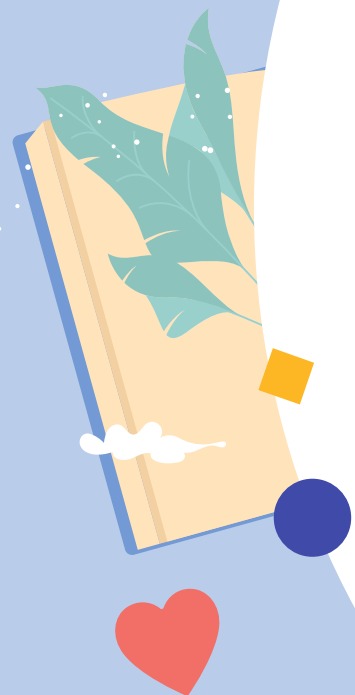
Phrasal verbs

Put out: to stop to fire burning

Put up: to let sb stay in your house

Put on: to place clothes on one's body

Put off: to postpone





Fill in the correct particle

1. He **put****on**.....his coat and left the house.
2. He **put****off**.....the meeting until the following week.
3. Bill **put** me.....**up**.....for the night as I could find nowhere else to stay.
4. Don't forget to **put**.....**out**.....the candles before you go to bed.

Homework



Workbook page 42 exercise 1-4

